

PACO15991

---

## Product Information

**Size:**

50ul

**Reactivity:**

Human, Mouse, Rat

**Source:**

Rabbit

**Isotype:**

IgG

**Applications:**

ELISA, IHC

**Recommended dilutions:**

ELISA:1:2000-1:10000, IHC:1:100-1:300

**Protein Background:**

CDC37L1 is a cytoplasmic phosphoprotein that exists in complex with HSP90 (HSPCA; MIM 140571) as well as several other proteins involved in HSP90-mediated protein folding.

**Gene ID:**

CDC37L1

**Uniprot**

Q7L3B6

**Synonyms:**

cell division cycle 37-like 1

**Immunogen:**

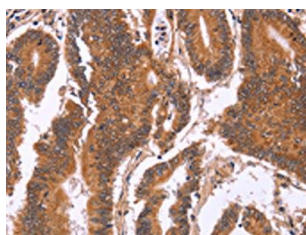
Fusion protein of human CDC37L1.

**Storage:**

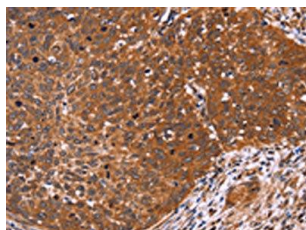
-20&deg; C, pH7.4 PBS, 0.05% NaN<sub>3</sub>, 40% Glycerol

## Product Images

---



The image on the left is immunohistochemistry of paraffin-embedded Human colon cancer tissue using PACO15991(CDC37L1 Antibody) at dilution 1/60, on the right is treated with fusion protein. (Original magnification: x—200).



The image on the left is immunohistochemistry of paraffin-embedded Human cervical cancer tissue using PACO15991(CDC37L1 Antibody) at dilution 1/60, on the right is treated with fusion protein. (Original magnification: x—200).