

# CDO1 Antibody



PACO16000

---

## Product Information

**Size:**

50ul

**Reactivity:**

Human, Mouse, Rat

**Source:**

Rabbit

**Isotype:**

IgG

**Applications:**

ELISA, IHC

**Recommended dilutions:**

ELISA:1:1000-1:2000, IHC:1:25-1:100

**Protein Background:**

CDO1 (cysteine dioxygenase, type I) is a 200 amino acid, protein that belongs to the cysteine dioxygenase family and is involved in organosulfur biosynthesis. Existing as a monomer and expressed at high levels in liver and placenta and at lower levels in brain, pancreas and heart, CDO1 functions as a dioxygenase that uses iron and zinc as cofactors to catalyze the conversion of L-cysteine and oxygen to 3-sulfinoalanine.

**Gene ID:**

CDO1

**Uniprot**

Q16878

**Synonyms:**

cysteine dioxygenase type 1

**Immunogen:**

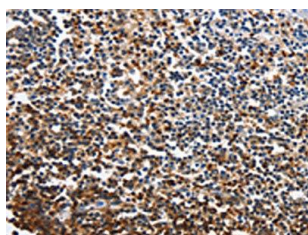
Fusion protein of human CDO1.

**Storage:**

-20&deg; C, pH7.4 PBS, 0.05% NaN<sub>3</sub>, 40% Glycerol

## Product Images

---



The image on the left is immunohistochemistry of paraffin-embedded Human tonsil tissue using PACO16000(CDO1 Antibody) at dilution 1/40, on the right is treated with fusion protein. (Original magnification: x—200).