

Product Information

Size:

50ul

Reactivity:

Human, Rat

Source:

Rabbit

Isotype:

IgG

Applications:

ELISA, WB

Recommended dilutions:

ELISA:1:1000-1:2000, WB:1:200-1:1000

Protein Background:

Centrosomal protein of 55 kDa is a protein that in humans is encoded by the CEP55 gene. CEP55 is a mitotic phosphoprotein that plays a key role in cytokinesis, the final stage of cell division. Interacts (phosphorylated on Ser-425 and Ser-428) with PLK1. Interacts with AKAP9; the interaction occurs in interphase and is lost upon mitotic entry. Interacts with PCNT; the interaction occurs in interphase and is lost upon mitotic entry. Interacts with PD6IP1; the interaction is direct; CEP55 binds PD6IP1 in a 2:1 stoichiometry; PD6IP1 competes with TSG101 for the same binding site.

Gene ID:

CEP55

Uniprot

Q53EZ4

Synonyms:

centrosomal protein 55kDa

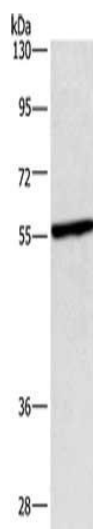
Immunogen:

Fusion protein of human CEP55.

Storage:

-20°C, pH7.4 PBS, 0.05% NaN₃, 40% Glycerol

Product Images



Gel: 10%SDS-PAGE, Lysate: 40 μ g, Lane: HeLa cells, Primary antibody: PACO16014(CEP55 Antibody) at dilution 1/550, Secondary antibody: Goat anti rabbit IgG at 1/8000 dilution, Exposure time: 3 minutes.