

### Product Information

**Size:**

50ul

**Reactivity:**

Human

**Source:**

Rabbit

**Isotype:**

IgG

**Applications:**

ELISA, WB, IHC

**Recommended dilutions:**

ELISA:1:2000-1:5000, WB:1:500-1:2000,  
IHC:1:50-1:200

**Protein Background:**

Centrosomal protein of 97 kDa (Cep97), also known as leucine-rich repeat and IQ domain-containing protein 2 (LRRIQ2), is a protein that in humans is encoded by the CEP97 gene. Acts as a key negative regulator of ciliogenesis in collaboration with CCP110 by capping the mother centriole thereby preventing cilia formation. Required for recruitment of CCP110 to the centrosome. Interacts with CALM1, CEP76 and CCP110. Via its interaction with CCP110, may indirectly interact with HERC2 and NEURL4. Interacts with KIF24.

**Gene ID:**

CEP97

**Uniprot**

Q8IW35

**Synonyms:**

centrosomal protein 97kDa

**Immunogen:**

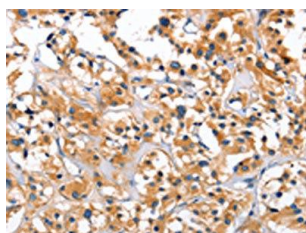
Fusion protein of human CEP97.

**Storage:**

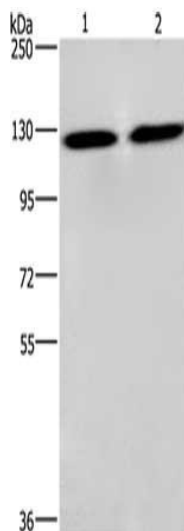
-20°C, pH7.4 PBS, 0.05% NaN<sub>3</sub>, 40% Glycerol

## Product Images

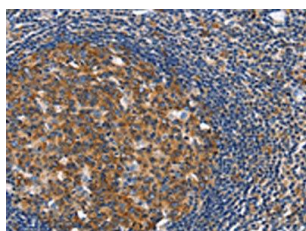
---



The image on the left is immunohistochemistry of paraffin-embedded Human thyroid cancer tissue using PACO16016(CEP97 Antibody) at dilution 1/40, on the right is treated with fusion protein. (Original magnification: x—200).



Gel: 6%SDS-PAGE, Lysate: 40 &mu; g, Lane 1-2: PC3 cells, lovo cells, Primary antibody: PACO16016(CEP97 Antibody) at dilution 1/750, Secondary antibody: Goat anti rabbit IgG at 1/8000 dilution, Exposure time: 3 seconds.



The image on the left is immunohistochemistry of paraffin-embedded Human tonsil tissue using PACO16016(CEP97 Antibody) at dilution 1/40, on the right is treated with fusion protein. (Original magnification: x—200).