

PACO16021

Product Information

Size:

50ul

Reactivity:

Human

Source:

Rabbit

Isotype:

IgG

Applications:

ELISA, WB, IHC

Recommended dilutions:

ELISA:1:1000-1:2000, WB:1:200-1:1000,
IHC:1:25-1:100

Protein Background:

This gene is a member of the glycoprotein hormone beta chain family and encodes the beta 3 subunit of chorionic gonadotropin (CG). Glycoprotein hormones are heterodimers consisting of a common alpha subunit and an unique beta subunit which confers biological specificity. CG is produced by the trophoblastic cells of the placenta and stimulates the ovaries to synthesize the steroids that are essential for the maintenance of pregnancy. The beta subunit of CG is encoded by 6 genes which are arranged in tandem and inverted pairs on chromosome 19q13.3 and contiguous with the luteinizing hormone beta subunit gene.

Gene ID:

CGB

Uniprot

P01233

Synonyms:

chorionic gonadotropin, beta polypeptide

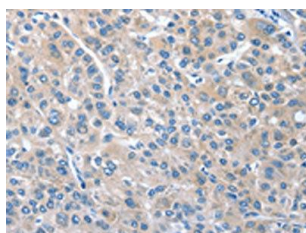
Immunogen:

Fusion protein of human CGB.

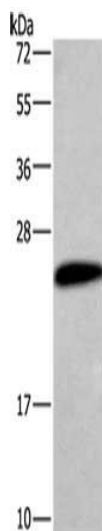
Storage:

-20° C, pH7.4 PBS, 0.05% NaN3, 40% Glycerol

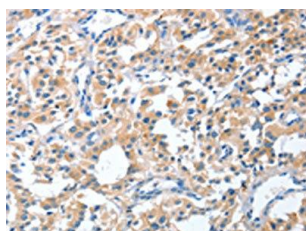
Product Images



The image on the left is immunohistochemistry of paraffin-embedded Human liver cancer tissue using PACO16021(CGB Antibody) at dilution 1/40, on the right is treated with fusion protein. (Original magnification: x—200).



Gel: 10%SDS-PAGE, Lysate: 40 μ g, Lane: Human placenta tissue, Primary antibody: PACO16021(CGB Antibody) at dilution 1/454, Secondary antibody: Goat anti rabbit IgG at 1/8000 dilution, Exposure time: 5 minutes.



The image on the left is immunohistochemistry of paraffin-embedded Human thyroid cancer tissue using PACO16021(CGB Antibody) at dilution 1/40, on the right is treated with fusion protein. (Original magnification: x—200).