

PACO16059

---

## Product Information

**Size:**

50ul

**Reactivity:**

Human, Mouse

**Source:**

Rabbit

**Isotype:**

IgG

**Applications:**

ELISA, WB, IHC

**Recommended dilutions:**

ELISA:1:2000-1:5000, WB:1:500-1:2000,  
IHC:1:50-1:200

**Protein Background:**

This gene encodes a member of the WD repeat protein family. WD repeats are minimally conserved regions of approximately 40 amino acid, typically bracketed by gly-his and trp-asn (GH-WD), which may facilitate formation of heterotrimeric or multiprotein complexes. Members of this family are involved in a variety of cellular processes, including cell cycle progression, signal transduction, apoptosis, and gene regulation. Three transcript variants encoding two different isoforms have been found for this gene.

**Gene ID:**

CORO1C

**Uniprot**

Q9ULV4

**Synonyms:**

coronin, actin binding protein, 1C

**Immunogen:**

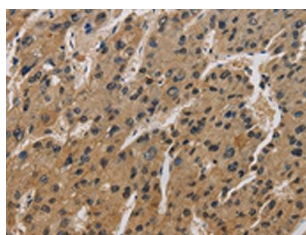
Fusion protein of human CORO1C.

**Storage:**

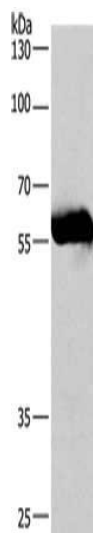
-20°C, pH7.4 PBS, 0.05% NaN<sub>3</sub>, 40% Glycerol

## Product Images

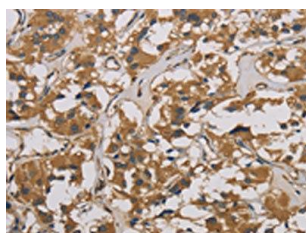
---



The image is immunohistochemistry of paraffin-embedded Human liver cancer tissue using PACO16059(CORO1C Antibody) at dilution 1/50. (Original magnification: x—200).



Gel: 8%SDS-PAGE, Lysate: 40 &mu; g, Lane: Lovo cells, Primary antibody: PACO16059(CORO1C Antibody) at dilution 1/530, Secondary antibody: Goat anti rabbit IgG at 1/8000 dilution, Exposure time: 40 seconds.



The image is immunohistochemistry of paraffin-embedded Human thyroid cancer tissue using PACO16059(CORO1C Antibody) at dilution 1/50. (Original magnification: x—200).