

## Product Information

**Size:**

50ul

**Reactivity:**

Human, Mouse, Rat

**Source:**

Rabbit

**Isotype:**

IgG

**Applications:**

ELISA, WB, IHC

**Recommended dilutions:**

ELISA:1:2000-1:5000, WB:1:200-1:1000,  
IHC:1:50-1:200

**Protein Background:**

CXXC5 (CXXC finger 5), also known as RINF or HSPC195, is a 322 amino acid, protein that localizes to both the nucleus and the cytoplasm and contains one CXXC-type zinc finger. Interacting with Dvl-1, CXXC5 acts as a mediator of Wnt signaling in neural stem cells and is thought to participate in the activation of MAP kinase pathways. The gene encoding CXXC5 maps to human chromosome 5 and is expressed as multiple alternatively spliced isoforms.

**Gene ID:**

CXXC5

**Uniprot**

Q7LFL8

**Synonyms:**

CXXC finger protein 5

**Immunogen:**

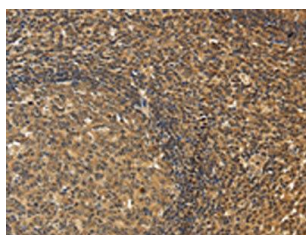
Fusion protein of human CXXC5.

**Storage:**

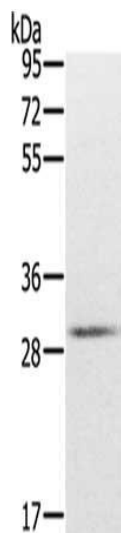
-20&deg; C, pH7.4 PBS, 0.05% NaN3, 40% Glycerol

## Product Images

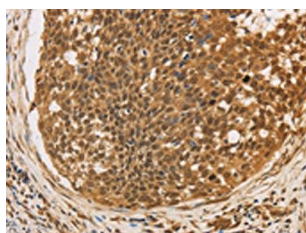
---



The image on the left is immunohistochemistry of paraffin-embedded Human tonsil tissue using PACO16092(CXXC5 Antibody) at dilution 1/20, on the right is treated with fusion protein. (Original magnification: x—200).



Gel: 8%SDS-PAGE, Lysate: 40 &mu; g, Lane: Mouse brain tissue, Primary antibody: PACO16092(CXXC5 Antibody) at dilution 1/200, Secondary antibody: Goat anti rabbit IgG at 1/8000 dilution, Exposure time: 1 minute.



The image on the left is immunohistochemistry of paraffin-embedded Human cervical cancer tissue using PACO16092(CXXC5 Antibody) at dilution 1/20, on the right is treated with fusion protein. (Original magnification: x—200).