

PACO16098

Product Information

Size:

50ul

Reactivity:

Human, Mouse

Source:

Rabbit

Isotype:

IgG

Applications:

ELISA, WB, IHC

Recommended dilutions:

ELISA:1:2000-1:5000, WB:1:500-1:2000,
IHC:1:50-1:200

Protein Background:

CYFIP2 (Cytoplasmic FMR1-interacting protein 2, p53-inducible protein 121) is a 1,278 amino acid, protein encoded by the human gene CYFIP2. CYFIP2 belongs to the CYFIP family and is involved in T-cell adhesion and p53-dependent induction of apoptosis. It interacts with FMR1, FXR1 and FXR2 and is a component of the WAVE1 complex composed of Abi-2, CYFIP2, C3orf10/HSPC300, NAP125 and WASF1/WAVE1. Upon binding to activated Rac 1, CYFIP2 causes the complex to dissociate, releasing activated WASF1. The CYFIP2 promoter contains a p53-responsive element that confers p53 binding as well as transcriptional activation of a heterologous reporter. Induced expression of CYFIP2 is sufficient for caspase activation and cellular apoptosis, reminiscent of p53 activation.

Gene ID:

CYFIP2

Uniprot

Q96F07

Synonyms:

cytoplasmic FMR1 interacting protein 2

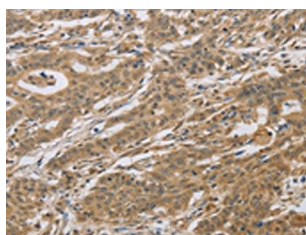
Immunogen:

Fusion protein of human CYFIP2.

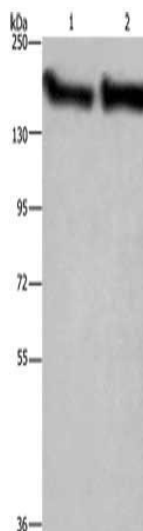
Storage:

-20° C, pH7.4 PBS, 0.05% NaN3, 40% Glycerol

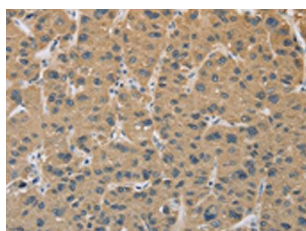
Product Images



The image on the left is immunohistochemistry of paraffin-embedded Human gastric cancer tissue using PACO16098(CYFIP2 Antibody) at dilution 1/25, on the right is treated with fusion protein. (Original magnification: x—200).



Gel: 6%SDS-PAGE, Lysate: 40 μ g, Lane 1-2: Mouse brain tissue, human fetal brain tissue, Primary antibody: PACO16098(CYFIP2 Antibody) at dilution 1/300, Secondary antibody: Goat anti rabbit IgG at 1/8000 dilution, Exposure time: 2 minutes.



The image on the left is immunohistochemistry of paraffin-embedded Human liver cancer tissue using PACO16098(CYFIP2 Antibody) at dilution 1/25, on the right is treated with fusion protein. (Original magnification: x—200).