

Product Information

Size:

50ul

Reactivity:

Human, Mouse, Rat

Source:

Rabbit

Isotype:

IgG

Applications:

ELISA, WB, IHC

Recommended dilutions:

ELISA:1:1000-1:2000, WB:1:200-1:1000,
IHC:1:50-1:200

Protein Background:

The protein encoded by this gene is a membrane-bound cytochrome that reduces ferric hemoglobin (methemoglobin) to ferrous hemoglobin, which is required for stearyl-CoA-desaturase activity. Defects in this gene are a cause of type IV hereditary methemoglobinemia. Three transcript variants encoding different isoforms have been found for this gene.

Gene ID:

CYB5A

Uniprot

P00167

Synonyms:

cytochrome b5 type A (microsomal)

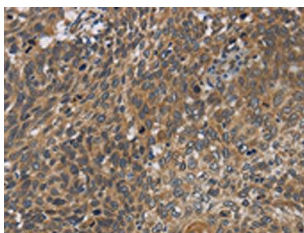
Immunogen:

Fusion protein of human CYB5A.

Storage:

-20° C, pH7.4 PBS, 0.05% NaN3, 40% Glycerol

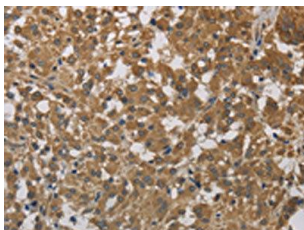
Product Images



The image on the left is immunohistochemistry of paraffin-embedded Human cervical cancer tissue using PACO16130(CYB5A Antibody) at dilution 1/40, on the right is treated with fusion protein. (Original magnification: x—200).



Gel: 10%SDS-PAGE, Lysate: 40 μ g, Lane 1-3: Human kidney cancer tissue, mouse liver tissue, human bladder carcinoma tissue, Primary antibody: PACO16130(CYB5A Antibody) at dilution 1/300, Secondary antibody: Goat anti rabbit IgG at 1/8000 dilution, Exposure time: 1 minute.



The image on the left is immunohistochemistry of paraffin-embedded Human thyroid cancer tissue using PACO16130(CYB5A Antibody) at dilution 1/40, on the right is treated with fusion protein. (Original magnification: x—200).