

### Product Information

**Size:**

50ul

**Reactivity:**

Human, Mouse

**Source:**

Rabbit

**Isotype:**

IgG

**Applications:**

ELISA, IHC

**Recommended dilutions:**

ELISA:1:2000-1:10000, IHC:1:100-1:300

**Protein Background:**

This gene encodes a chromatin-associated protein that associates with other DNA-binding transcription factors to regulate gene expression and cell fate determination during development. The protein contains a Ski domain that is highly conserved from Drosophila to human. Expression of this gene is lost in some forms of metastatic cancer, and is correlated with poor prognosis. Multiple transcript variants encoding different isoforms have been found for this gene.

**Gene ID:**

DACH1

**Uniprot**

Q9UI36

**Synonyms:**

dachshund homolog 1 (Drosophila)

**Immunogen:**

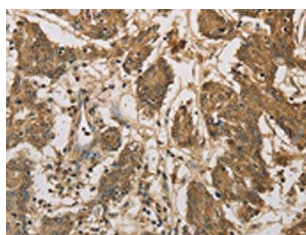
Fusion protein of human DACH1.

**Storage:**

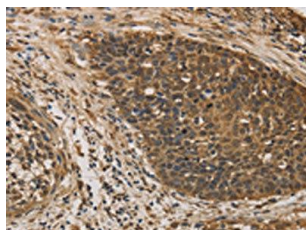
-20&deg; C, pH7.4 PBS, 0.05% NaN<sub>3</sub>, 40% Glycerol

## Product Images

---



The image on the left is immunohistochemistry of paraffin-embedded Human colon cancer tissue using PACO16135(DACH1 Antibody) at dilution 1/50, on the right is treated with fusion protein. (Original magnification: x—200).



The image on the left is immunohistochemistry of paraffin-embedded Human cervical cancer tissue using PACO16135(DACH1 Antibody) at dilution 1/50, on the right is treated with fusion protein. (Original magnification: x—200).