

PACO16138

Product Information

Size:

50ul

Reactivity:

Human, Rat

Source:

Rabbit

Isotype:

IgG

Applications:

ELISA, IHC

Recommended dilutions:

ELISA:1:2000-1:5000, IHC:1:50-1:200

Protein Background:

This gene encodes a bifunctional signal transduction molecule. Dopaminergic and glutamatergic receptor stimulation regulates its phosphorylation and function as a kinase or phosphatase inhibitor. As a target for dopamine, this gene may serve as a therapeutic target for neurologic and psychiatric disorders. Multiple transcript variants encoding different isoforms have been found for this gene.

Gene ID:

PPP1R1B

Uniprot

Q9UD71

Synonyms:

protein phosphatase 1, regulatory (inhibitor) subunit 1B

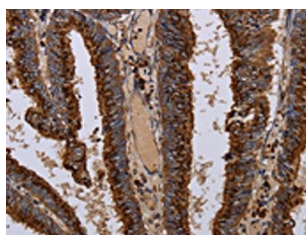
Immunogen:

Fusion protein of human PPP1R1B.

Storage:

-20° C, pH7.4 PBS, 0.05% NaN₃, 40% Glycerol

Product Images



The image on the left is immunohistochemistry of paraffin-embedded Human colon cancer tissue using PACO16138(PPP1R1B Antibody) at dilution 1/50, on the right is treated with fusion protein. (Original magnification: x—200).