

PACO16145

---

## Product Information

**Size:**

50ul

**Reactivity:**

Human, Mouse, Rat

**Source:**

Rabbit

**Isotype:**

IgG

**Applications:**

ELISA, IHC

**Recommended dilutions:**

ELISA:1:2000-1:10000, IHC:1:100-1:300

**Protein Background:**

CLCP1 (CUB, LCCL and coagulation factor V/VIII-homology domains protein 1), also known as DCBLD2 (discoidin, CUB and LCCL domain containing 2) or ESDN, is a 775 amino acid, single-pass type I membrane protein that contains one CUB domain, one LCCL domain and one F5/8 type C domain. Expressed at high levels in heart, testis and skeletal muscle, CLCP1 is thought to regulate vascular smooth muscle cell (VSMC) proliferation and remodeling and may be involved in the transformation and metastasis of various cancers, such as metastatic lung cancer and gastric carcinoma.

**Gene ID:**

DCBLD2

**Uniprot**

Q96PD2

**Synonyms:**

discoidin, CUB and LCCL domain containing 2

**Immunogen:**

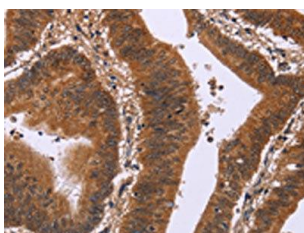
Fusion protein of human DCBLD2.

**Storage:**

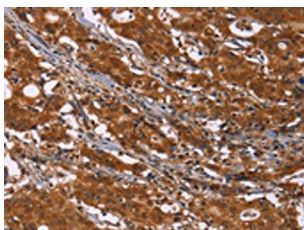
-20&deg; C, pH7.4 PBS, 0.05% NaN3, 40% Glycerol

## Product Images

---



The image on the left is immunohistochemistry of paraffin-embedded Human colon cancer tissue using PACO16145(DCBLD2 Antibody) at dilution 1/50, on the right is treated with fusion protein. (Original magnification: x—200).



The image on the left is immunohistochemistry of paraffin-embedded Human gastic cancer tissue using PACO16145(DCBLD2 Antibody) at dilution 1/50, on the right is treated with fusion protein. (Original magnification: x—200).