

# MAPRE3 Antibody



PACO16215

---

## Product Information

**Size:**

50ul

**Reactivity:**

Human, Mouse, Rat

**Source:**

Rabbit

**Isotype:**

IgG

**Applications:**

ELISA, WB, IHC

**Recommended dilutions:**

ELISA:1:2000-1:5000, WB:1:500-1:2000,  
IHC:1:25-1:100

**Protein Background:**

The protein encoded by this gene is a member of the RP/EB family of genes. The protein localizes to the cytoplasmic microtubule network and binds APCL, a homolog of the adenomatous polyposis coli tumor suppressor gene.

**Gene ID:**

MAPRE3

**Uniprot**

Q9UPY8

**Synonyms:**

microtubule-associated protein, RP/EB family, member 3

**Immunogen:**

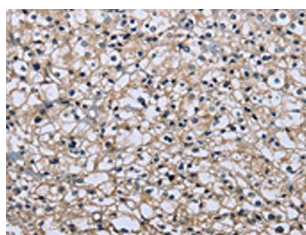
Fusion protein of human MAPRE3.

**Storage:**

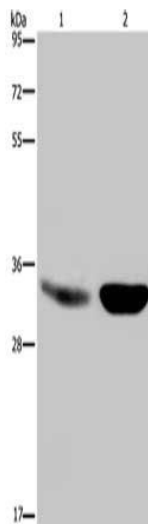
-20°C; C, pH7.4 PBS, 0.05% NaN<sub>3</sub>, 40% Glycerol

## Product Images

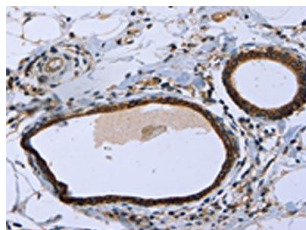
---



The image on the left is immunohistochemistry of paraffin-embedded Human prostate cancer tissue using PACO16215(MAPRE3 Antibody) at dilution 1/20, on the right is treated with fusion protein. (Original magnification: x—200).



Gel: 8%SDS-PAGE, Lysate: 40 &mu; g, Lane 1-2: Human fetal brain tissue, mouse brain tissue, Primary antibody: PACO16215(MAPRE3 Antibody) at dilution 1/500, Secondary antibody: Goat anti rabbit IgG at 1/8000 dilution, Exposure time: 5 seconds.



The image on the left is immunohistochemistry of paraffin-embedded Human breast cancer tissue using PACO16215(MAPRE3 Antibody) at dilution 1/20, on the right is treated with fusion protein. (Original magnification: x—200).