

## Product Information

**Size:**

50ul

**Reactivity:**

Human, Mouse, Rat

**Source:**

Rabbit

**Isotype:**

IgG

**Applications:**

ELISA, WB

**Recommended dilutions:**

ELISA:1:2000-1:5000, WB:1:500-1:2000

**Protein Background:**

The protein encoded by this gene has a C-terminal domain with tRNA 3' trailer processing endoribonuclease activity, which catalyzes the removal of the 3' trailer from precursor tRNAs. The protein also interacts with activated Smad family member 2 (Smad2) and its nuclear partner forkhead box H1 (also known as FAST-1), and reduced expression can suppress transforming growth factor-beta induced growth arrest. Mutations in this gene result in an increased risk of prostate cancer. Multiple transcript variants encoding different isoforms have been found for this gene.

**Gene ID:**

ELAC2

**Uniprot**

Q9BQ52

**Synonyms:**

elaC ribonuclease Z 2

**Immunogen:**

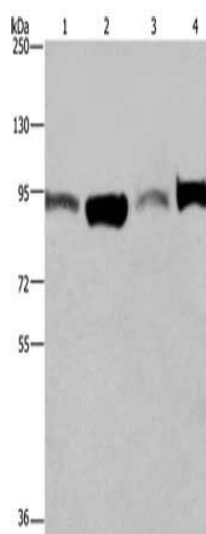
Fusion protein of human ELAC2.

**Storage:**

-20°C; C, pH7.4 PBS, 0.05% NaN3, 40% Glycerol

## Product Images

---



Gel: 6%SDS-PAGE, Lysate: 40  $\mu$ g, Lane 1-4: A375 cells, LoVo cells, human testis tissue, Hela cells, Primary antibody: PACO16249(ELAC2 Antibody) at dilution 1/250, Secondary antibody: Goat anti rabbit IgG at 1/8000 dilution, Exposure time: 30 seconds.