

### Product Information

**Size:**

50ul

**Reactivity:**

Human, Mouse, Rat

**Source:**

Rabbit

**Isotype:**

IgG

**Applications:**

ELISA, WB, IHC

**Recommended dilutions:**

ELISA:1:2000-1:5000, WB:1:500-1:2000,  
IHC:1:25-1:100

**Protein Background:**

The cytoplasmic peripheral membrane protein encoded by this gene functions as a protein-tyrosine kinase substrate in microvilli. As a member of the ERM protein family, this protein serves as an intermediate between the plasma membrane and the actin cytoskeleton. This protein plays a key role in cell surface structure adhesion, migration and organization, and it has been implicated in various human cancers. A pseudogene located on chromosome 3 has been identified for this gene. Alternatively spliced variants have also been described for this gene.

**Gene ID:**

EZR

**Uniprot**

P15311

**Synonyms:**

ezrin

**Immunogen:**

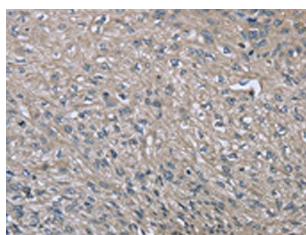
Fusion protein of human EZR.

**Storage:**

-20°C, pH7.4 PBS, 0.05% NaN<sub>3</sub>, 40% Glycerol

## Product Images

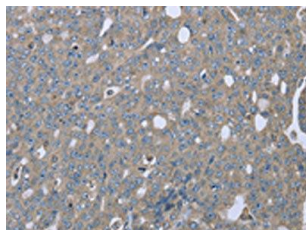
---



The image on the left is immunohistochemistry of paraffin-embedded Human esophagus cancer tissue using PACO16286(EZR Antibody) at dilution 1/20, on the right is treated with fusion protein. (Original magnification: x—200).



Gel: 6%SDS-PAGE, Lysate: 40 &mu; g, Lane: Mouse kidney tissue, Primary antibody: PACO16286(EZR Antibody) at dilution 1/200, Secondary antibody: Goat anti rabbit IgG at 1/8000 dilution, Exposure time: 30 seconds.



The image on the left is immunohistochemistry of paraffin-embedded Human ovarian cancer tissue using PACO16286(EZR Antibody) at dilution 1/20, on the right is treated with fusion protein. (Original magnification: x—200).