

Product Information

Size:

50ul

Reactivity:

Human

Source:

Rabbit

Isotype:

IgG

Applications:

ELISA, IHC

Recommended dilutions:

ELISA:1:2000-1:5000, IHC:1:50-1:200

Protein Background:

FAM107B is a 131 amino acid, protein that is encoded by a gene that maps to human chromosome 10, which contains over 800 genes and 135 million nucleotides, making up nearly 4.5% of the human genome. PTEN is an important tumor suppressor gene located on chromosome 10 and, when defective, causes a genetic predisposition to cancer development known as Cowden syndrome. The chromosome 10 encoded gene ERCC6 is important for DNA repair and is linked to Cockayne syndrome which is characterized by extreme photosensitivity and premature aging. Tetrahydrobiopterin deficiency and a number of syndromes involving defective skull and facial bone fusion are also linked to chromosome 10. As with most trisomies, trisomy 10 is rare and is deleterious.

Gene ID:

FAM107A

Uniprot

O95990

Synonyms:

family with sequence similarity 107, member A

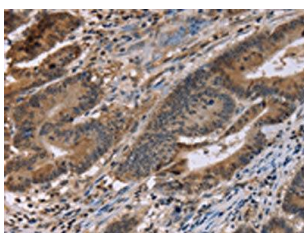
Immunogen:

Fusion protein of human FAM107A.

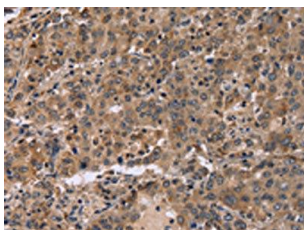
Storage:

-20° C, pH7.4 PBS, 0.05% NaN₃, 40% Glycerol

Product Images



The image on the left is immunohistochemistry of paraffin-embedded Human colon cancer tissue using PACO16302(FAM107A Antibody) at dilution 1/30, on the right is treated with fusion protein. (Original magnification: x—200).



The image on the left is immunohistochemistry of paraffin-embedded Human liver cancer tissue using PACO16302(FAM107A Antibody) at dilution 1/30, on the right is treated with fusion protein. (Original magnification: x—200).