

PACO16353

Product Information

Size:

50ul

Reactivity:

Human, Mouse, Rat

Source:

Rabbit

Isotype:

IgG

Applications:

ELISA, WB, IHC

Recommended dilutions:

ELISA:1:2000-1:10000, WB:1:1000-1:5000,
IHC:1:100-1:300

Protein Background:

This gene encodes a member of the four-and-a-half-LIM-only protein family. Family members contain two highly conserved, tandemly arranged, zinc finger domains with four highly conserved cysteines binding a zinc atom in each zinc finger. This protein is thought to have a role in the assembly of extracellular membranes. Also, this gene is down-regulated during transformation of normal myoblasts to rhabdomyosarcoma cells and the encoded protein may function as a link between presenilin-2 and an intracellular signaling pathway. Multiple alternatively spliced variants, encoding the same protein, have been identified.

Gene ID:

FHL2

Uniprot

Q14192

Synonyms:

four and a half LIM domains 2

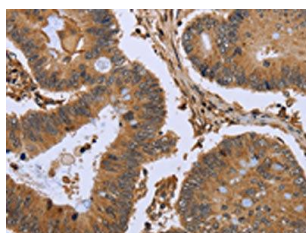
Immunogen:

Fusion protein of human FHL2.

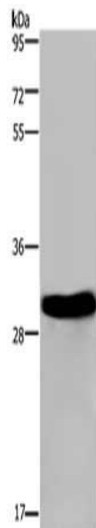
Storage:

-20°C, pH7.4 PBS, 0.05% NaN₃, 40% Glycerol

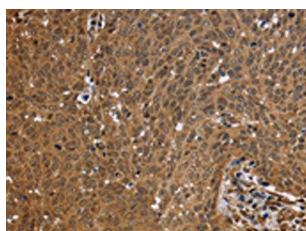
Product Images



The image on the left is immunohistochemistry of paraffin-embedded Human colon cancer tissue using PACO16353(FHL2 Antibody) at dilution 1/50, on the right is treated with fusion protein. (Original magnification: x—200).



Gel: 8%SDS-PAGE, Lysate: 40 μ g, Lane: Mouse heart tissue, Primary antibody: PACO16353(FHL2 Antibody) at dilution 1/2400, Secondary antibody: Goat anti rabbit IgG at 1/8000 dilution, Exposure time: 3 seconds.



The image on the left is immunohistochemistry of paraffin-embedded Human cervical cancer tissue using PACO16353(FHL2 Antibody) at dilution 1/50, on the right is treated with fusion protein. (Original magnification: x—200).