

PACO16372

---

## Product Information

**Size:**

50ul

**Reactivity:**

Human, Mouse, Rat

**Source:**

Rabbit

**Isotype:**

IgG

**Applications:**

ELISA, WB, IHC

**Recommended dilutions:**

ELISA:1:2000-1:5000, WB:1:500-1:2000,  
IHC:1:50-1:200

**Protein Background:**

The protein encoded by this gene belongs to the TYR family of protein kinases. This tyrosine kinase is a nuclear protein and may function during G1 and S phase of the cell cycle and suppress growth.

**Gene ID:**

FRK

**Uniprot**

P42685

**Synonyms:**

fyn-related kinase

**Immunogen:**

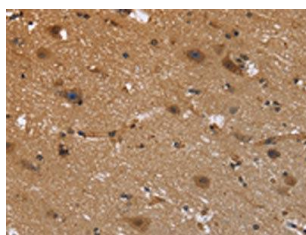
Fusion protein of human FRK.

**Storage:**

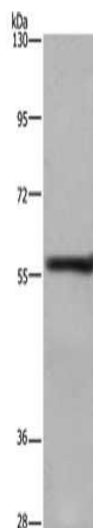
-20°C; C, pH7.4 PBS, 0.05% NaN<sub>3</sub>, 40% Glycerol

## Product Images

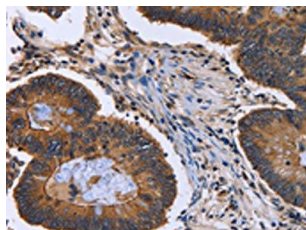
---



The image is immunohistochemistry of paraffin-embedded Human brain tissue using PACO16372(FRK Antibody) at dilution 1/40. (Original magnification: x—200).



Gel: 6%SDS-PAGE, Lysate: 40 &mu; g, Lane: A431 cells, Primary antibody: PACO16372(FRK Antibody) at dilution 1/1000, Secondary antibody: Goat anti rabbit IgG at 1/8000 dilution, Exposure time: 5 minutes.



The image is immunohistochemistry of paraffin-embedded Human colon cancer tissue using PACO16372(FRK Antibody) at dilution 1/40. (Original magnification: x—200).