

Product Information

Size:

50ul

Reactivity:

Human, Mouse, Rat

Source:

Rabbit

Isotype:

IgG

Applications:

ELISA, IHC

Recommended dilutions:

ELISA:1:2000-1:5000, IHC:1:50-1:200

Protein Background:

This gene encodes a protein with similarity to follistatin, an activin-binding protein. It contains an FS module, a follistatin-like sequence containing 10 conserved cysteine residues. This gene product is thought to be an autoantigen associated with rheumatoid arthritis.

Gene ID:

FSTL1

Uniprot

Q12841

Synonyms:

follistatin-like 1

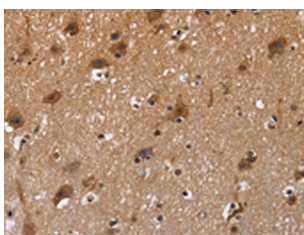
Immunogen:

Fusion protein of human FSTL1.

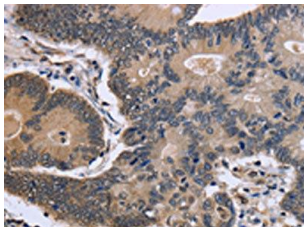
Storage:

-20° C, pH7.4 PBS, 0.05% NaN₃, 40% Glycerol

Product Images



The image is immunohistochemistry of paraffin-embedded Human brain tissue using PACO16374(FSTL1 Antibody) at dilution 1/40. (Original magnification: x—200).



The image is immunohistochemistry of paraffin-embedded Human colon cancer tissue using PACO16374(FSTL1 Antibody) at dilution 1/40. (Original magnification: x—200).