

# ARHGDI<sup>A</sup> Antibody



PACO16405

---

## Product Information

**Size:**

50ul

**Reactivity:**

Human, Mouse, Rat

**Source:**

Rabbit

**Isotype:**

IgG

**Applications:**

ELISA, WB, IHC

**Recommended dilutions:**

ELISA:1:2000-1:5000, WB:1:500-1:2000,  
IHC:1:50-1:200

**Protein Background:**

Aplysia Ras-related homologs (ARHs), also called Rho genes, belong to the RAS gene superfamily encoding small guanine nucleotide exchange (GTP/GDP) factors. The ARH proteins may be kept in the inactive, GDP-bound state by interaction with GDP dissociation inhibitors, such as ARHGDI<sup>A</sup>.

**Gene ID:**

ARHGDI<sup>A</sup>

**Uniprot**

P52565

**Synonyms:**

Rho GDP dissociation inhibitor (GDI) alpha

**Immunogen:**

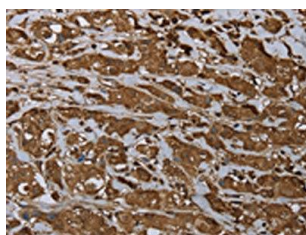
Fusion protein of human ARHGDI<sup>A</sup>.

**Storage:**

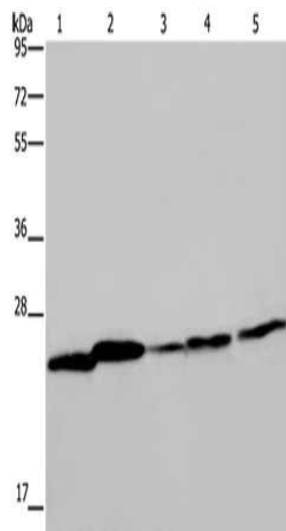
-20°C; C, pH7.4 PBS, 0.05% NaN<sub>3</sub>, 40% Glycerol

## Product Images

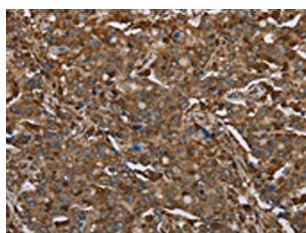
---



The image on the left is immunohistochemistry of paraffin-embedded Human breast cancer tissue using PACO16405(ARHGDI1 Antibody) at dilution 1/30, on the right is treated with fusion protein. (Original magnification: x—200).



Gel: 10%SDS-PAGE, Lysate: 40 &mu; g, Lane 1-5: Mouse spleen tissue, A375 cells, A549 cells, HT29 cells, Hela cells, Primary antibody: PACO16405(ARHGDI1 Antibody) at dilution 1/350, Secondary antibody: Goat anti rabbit IgG at 1/8000 dilution, Exposure time: 10 seconds.



The image on the left is immunohistochemistry of paraffin-embedded Human liver cancer tissue using PACO16405(ARHGDI1 Antibody) at dilution 1/30, on the right is treated with fusion protein. (Original magnification: x—200).