

PACO16407

Product Information

Size:

50ul

Reactivity:

Human, Mouse, Rat

Source:

Rabbit

Isotype:

IgG

Applications:

ELISA, WB, IHC

Recommended dilutions:

ELISA:1:2000-1:5000, WB:1:500-1:2000,
IHC:1:50-1:200

Protein Background:

This gene encodes an enzyme which catalyzes the posttranslational modification of vitamin K-dependent protein. Many of these vitamin K-dependent proteins are involved in coagulation so the function of the encoded enzyme is essential for hemostasis. Mutations in this gene are associated with vitamin K-dependent coagulation defect and PXE-like disorder with multiple coagulation factor deficiency. Multiple transcript variants encoding different isoforms have been found for this gene.

Gene ID:

GGCX

Uniprot

P38435

Synonyms:

gamma-glutamyl carboxylase

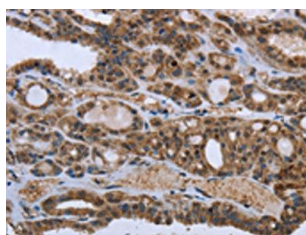
Immunogen:

Fusion protein of human GGCX.

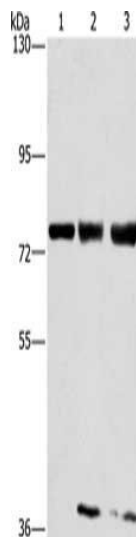
Storage:

-20° C, pH7.4 PBS, 0.05% NaN₃, 40% Glycerol

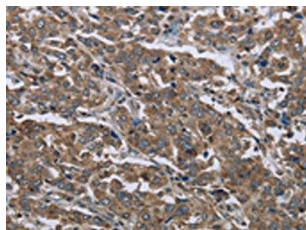
Product Images



The image on the left is immunohistochemistry of paraffin-embedded Human thyroid cancer tissue using PACO16407(GGCX Antibody) at dilution 1/50, on the right is treated with fusion protein. (Original magnification: x—200).



Gel: 6%SDS-PAGE, Lysate: 40 μ g, Lane 1-3: MCF7 cells, hela cells, 293T cells, Primary antibody: PACO16407(GGCX Antibody) at dilution 1/400, Secondary antibody: Goat anti rabbit IgG at 1/8000 dilution, Exposure time: 40 seconds.



The image on the left is immunohistochemistry of paraffin-embedded Human liver cancer tissue using PACO16407(GGCX Antibody) at dilution 1/50, on the right is treated with fusion protein. (Original magnification: x—200).