

Product Information

Size:

50ul

Reactivity:

Human, Mouse, Rat

Source:

Rabbit

Isotype:

IgG

Applications:

ELISA, WB, IHC

Recommended dilutions:

ELISA:1:2000-1:5000, WB:1:500-1:2000,
IHC:1:100-1:300

Protein Background:

Isocitrate dehydrogenases catalyze the oxidative decarboxylation of isocitrate to 2-oxoglutarate. These enzymes belong to two distinct subclasses, one of which utilizes NAD(+) as the electron acceptor and the other NADP(+). Five isocitrate dehydrogenases have been reported: three NAD(+)-dependent isocitrate dehydrogenases, which localize to the mitochondrial matrix, and two NADP(+)-dependent isocitrate dehydrogenases, one of which is mitochondrial and the other predominantly cytosolic. Each NADP(+)-dependent isozyme is a homodimer. The protein encoded by this gene is the NADP(+)-dependent isocitrate dehydrogenase found in the mitochondria. It plays a role in intermediary metabolism and energy production. This protein may tightly associate or interact with the pyruvate dehydrogenase complex. Alternative splicing results in multiple transcript variants.

Gene ID:

IDH2

Uniprot

P48735

Synonyms:

isocitrate dehydrogenase 2 (NADP+), mitochondrial

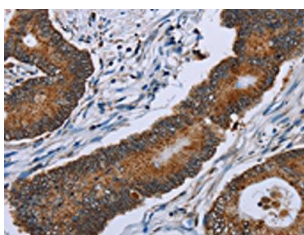
Immunogen:

Fusion protein of human IDH2.

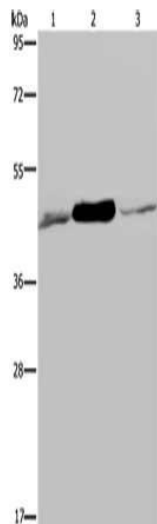
Storage:

-20° C, pH7.4 PBS, 0.05% NaN3, 40% Glycerol

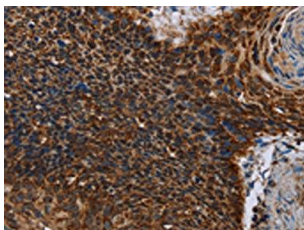
Product Images



The image on the left is immunohistochemistry of paraffin-embedded Human colon cancer tissue using PACO16520(IDH2 Antibody) at dilution 1/60, on the right is treated with fusion protein. (Original magnification: x—200).



Gel: 8%SDS-PAGE, Lysate: 40 μ g, Lane 1-3: 293T cells, Jurkat cells, human fetal muscle tissue, Primary antibody: PACO16520(IDH2 Antibody) at dilution 1/600, Secondary antibody: Goat anti rabbit IgG at 1/8000 dilution, Exposure time: 10 seconds.



The image on the left is immunohistochemistry of paraffin-embedded Human cervical cancer tissue using PACO16520(IDH2 Antibody) at dilution 1/60, on the right is treated with fusion protein. (Original magnification: x—200).