

PACO16530

---

## Product Information

**Size:**

50ul

**Reactivity:**

Human, Mouse

**Source:**

Rabbit

**Isotype:**

IgG

**Applications:**

ELISA, IHC

**Recommended dilutions:**

ELISA:1:2000-1:5000, IHC:1:50-1:200

**Protein Background:**

IKBKE is a noncanonical I-kappa-B (see MIM 164008) kinase (IKK) that is essential for regulating antiviral signaling pathways. IKBKE has also been identified as a breast cancer (MIM 114480) oncogene and is amplified and overexpressed in over 30% of breast carcinomas and breast cancer cell lines.

**Gene ID:**

IKBKE

**Uniprot**

Q14164

**Synonyms:**

inhibitor of  $\kappa$ ; light polypeptide gene enhancer in B-cells, kinase epsilon

**Immunogen:**

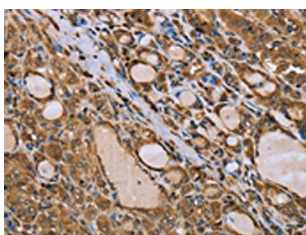
Fusion protein of human IKBKE.

**Storage:**

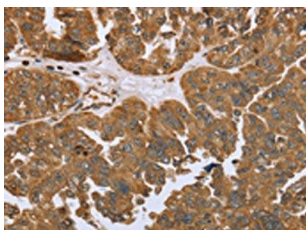
-20 $\text{\textcircled{C}}$ ; C, pH7.4 PBS, 0.05% NaN<sub>3</sub>, 40% Glycerol

## Product Images

---



The image on the left is immunohistochemistry of paraffin-embedded Human thyroid cancer tissue using PACO16530(IKBKE Antibody) at dilution 1/30, on the right is treated with fusion protein. (Original magnification: x—200).



The image on the left is immunohistochemistry of paraffin-embedded Human ovarian cancer tissue using PACO16530(IKBKE Antibody) at dilution 1/30, on the right is treated with fusion protein. (Original magnification: x—200).