

Product Information

Size:

50ul

Reactivity:

Human, Mouse, Rat

Source:

Rabbit

Isotype:

IgG

Applications:

ELISA, WB, IHC

Recommended dilutions:

ELISA:1:2000-1:5000, WB:1:500-1:2000,
IHC:1:50-1:200

Protein Background:

This gene encodes a nuclear protein with a JmjC domain. JmjC domain-containing proteins are predicted to function as protein hydroxylases or histone demethylases. This protein was first identified as a putative phosphatidylserine receptor involved in phagocytosis of apoptotic cells; however, subsequent studies have indicated that it does not directly function in the clearance of apoptotic cells, and questioned whether it is a true phosphatidylserine receptor. Multiple transcript variants encoding different isoforms have been found for this gene.

Gene ID:

JMJD6

Uniprot

Q6NYC1

Synonyms:

jumonji domain containing 6

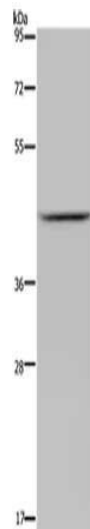
Immunogen:

Fusion protein of human JMJD6.

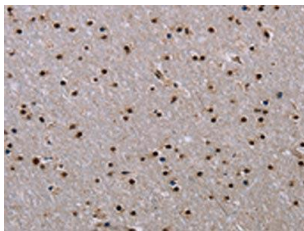
Storage:

-20° C, pH7.4 PBS, 0.05% NaN3, 40% Glycerol

Product Images



Gel: 8%SDS-PAGE, Lysate: 40 μ g, Lane: Mouse liver tissue, Primary antibody: PACO16567(JMJD6 Antibody) at dilution 1/800, Secondary antibody: Goat anti rabbit IgG at 1/8000 dilution, Exposure time: 1 minute.



The image on the left is immunohistochemistry of paraffin-embedded Human brain tissue using PACO16567(JMJD6 Antibody) at dilution 1/40, on the right is treated with fusion protein. (Original magnification: x—200).