

# LCMT1 Antibody



PACO16608

---

## Product Information

**Size:**

50ul

**Reactivity:**

Human, Rat

**Source:**

Rabbit

**Isotype:**

IgG

**Applications:**

ELISA, IHC

**Recommended dilutions:**

ELISA:1:1000-1:2000, IHC:1:25-1:100

**Protein Background:**

LCMT1 catalyzes the methylation of the carboxyl group of the C-terminal leucine residue (leu309) of the catalytic subunit of protein phosphatase-2A.

**Gene ID:**

LCMT1

**Uniprot**

Q9UIC8

**Synonyms:**

leucine carboxyl methyltransferase 1

**Immunogen:**

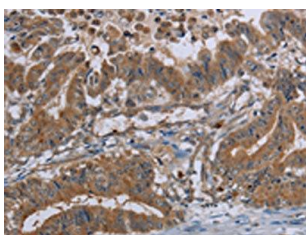
Fusion protein of human LCMT1.

**Storage:**

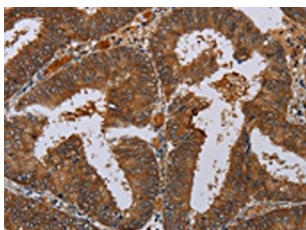
-20&deg; C, pH7.4 PBS, 0.05% NaN<sub>3</sub>, 40% Glycerol

## Product Images

---



The image on the left is immunohistochemistry of paraffin-embedded Human esophagus cancer tissue using PACO16608(LCMT1 Antibody) at dilution 1/20, on the right is treated with fusion protein. (Original magnification: x—200).



The image on the left is immunohistochemistry of paraffin-embedded Human colon cancer tissue using PACO16608(LCMT1 Antibody) at dilution 1/20, on the right is treated with fusion protein. (Original magnification: x—200).