

PACO16638

Product Information

Size:

50ul

Reactivity:

Human, Mouse, Rat

Source:

Rabbit

Isotype:

IgG

Applications:

ELISA, IHC

Recommended dilutions:

ELISA:1:1000-1:2000, IHC:1:25-1:100

Protein Background:

This gene encodes a tyrosine protein kinase, which maybe involved in the regulation of mast cell degranulation, and erythroid differentiation. Alternatively spliced transcript variants encoding different isoforms have been found for this gene.

Gene ID:

LYN

Uniprot

P07948

Synonyms:

v-yes-1 Yamaguchi sarcoma viral related oncogene homolog

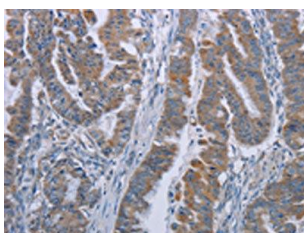
Immunogen:

Fusion protein of human LYN.

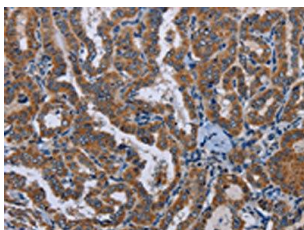
Storage:

-20° C, pH7.4 PBS, 0.05% NaN₃, 40% Glycerol

Product Images



The image on the left is immunohistochemistry of paraffin-embedded Human esophagus cancer tissue using PACO16638(LYN Antibody) at dilution 1/20, on the right is treated with fusion protein. (Original magnification: x—200).



The image on the left is immunohistochemistry of paraffin-embedded Human thyroid cancer tissue using PACO16638(LYN Antibody) at dilution 1/20, on the right is treated with fusion protein. (Original magnification: x—200).