

## Product Information

**Size:**

50ul

**Reactivity:**

Human, Mouse

**Source:**

Rabbit

**Isotype:**

IgG

**Applications:**

ELISA, WB, IHC

**Recommended dilutions:**

ELISA:1:2000-1:10000, WB:1:1000-1:5000,  
IHC:1:50-1:200

**Protein Background:**

The product of this gene functions in the NF-kappaB signal transduction pathway. The encoded protein, and the similar and functionally redundant protein MAP3K7IP2/TAB2, forms a ternary complex with the protein kinase MAP3K7/TAK1 and either TRAF2 or TRAF6 in response to stimulation with the pro-inflammatory cytokines TNF or IL-1. Subsequent MAP3K7/TAK1 kinase activity triggers a signaling cascade leading to activation of the NF-kappaB transcription factor. The human genome contains a related pseudogene.

**Gene ID:**

TAB3

**Uniprot**

Q8N5C8

**Synonyms:**

TGF-beta activated kinase 1/MAP3K7 binding protein 3

**Immunogen:**

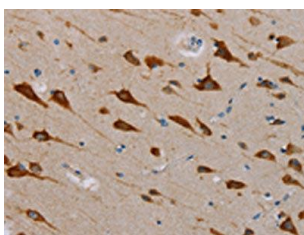
Fusion protein of human TAB3.

**Storage:**

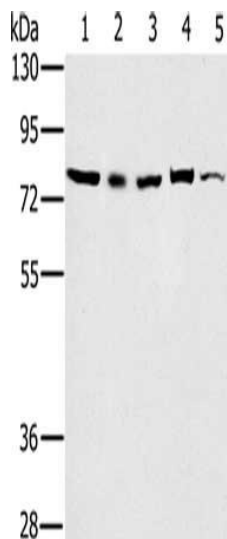
-20&deg; C, pH7.4 PBS, 0.05% NaN3, 40% Glycerol

## Product Images

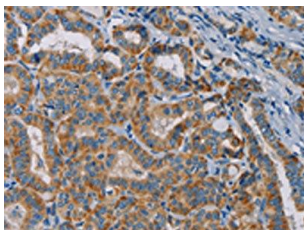
---



The image is immunohistochemistry of paraffin-embedded Human brain tissue using PACO16649(TAB3 Antibody) at dilution 1/25. (Original magnification: x—200).



Gel: 6%SDS-PAGE, Lysate: 40 &mu; g, Lane 1-5: 293T cells, Raw264.7 cells, NIH/3T3 cells, K562 cells, Jurkat cells, Primary antibody: PACO16649(TAB3 Antibody) at dilution 1/800, Secondary antibody: Goat anti rabbit IgG at 1/8000 dilution, Exposure time: 10 seconds.



The image is immunohistochemistry of paraffin-embedded Human thyroid cancer tissue using PACO16649(TAB3 Antibody) at dilution 1/25. (Original magnification: x—200).