

PACO16650

Product Information

Size:

50ul

Reactivity:

Human, Mouse

Source:

Rabbit

Isotype:

IgG

Applications:

ELISA, WB, IHC

Recommended dilutions:

ELISA:1:1000-1:2000, WB:1:200-1:1000,
IHC:1:50-1:200

Protein Background:

The product of this gene functions in the NF-kappaB signal transduction pathway. The encoded protein, and the similar and functionally redundant protein MAP3K7IP2/TAB2, forms a ternary complex with the protein kinase MAP3K7/TAK1 and either TRAF2 or TRAF6 in response to stimulation with the pro-inflammatory cytokines TNF or IL-1. Subsequent MAP3K7/TAK1 kinase activity triggers a signaling cascade leading to activation of the NF-kappaB transcription factor. The human genome contains a related pseudogene.

Gene ID:

TAB3

Uniprot

Q8N5C8

Synonyms:

TGF-beta activated kinase 1/MAP3K7 binding protein 3

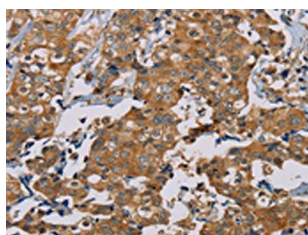
Immunogen:

Fusion protein of human TAB3.

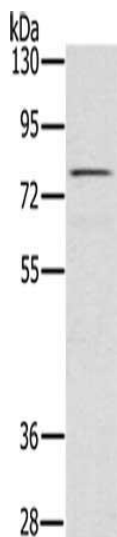
Storage:

-20° C, pH7.4 PBS, 0.05% NaN3, 40% Glycerol

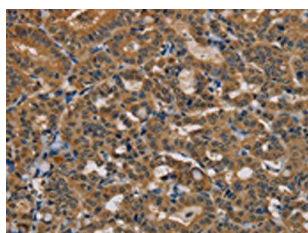
Product Images



The image is immunohistochemistry of paraffin-embedded Human thyroid cancer tissue using PACO16650(TAB3 Antibody) at dilution 1/35. (Original magnification: x—200).



Gel: 6%SDS-PAGE, Lysate: 40 μ g, Lane: Raw264.7 cells, Primary antibody: PACO16650(TAB3 Antibody) at dilution 1/500, Secondary antibody: Goat anti rabbit IgG at 1/8000 dilution, Exposure time: 10 seconds.



The image is immunohistochemistry of paraffin-embedded Human thyroid cancer tissue using PACO16650(TAB3 Antibody) at dilution 1/35. (Original magnification: x—200).