

ZC3H12A Antibody



PACO16660

Product Information

Size:

50ul

Reactivity:

Human

Source:

Rabbit

Isotype:

IgG

Applications:

ELISA, WB, IHC

Recommended dilutions:

ELISA:1:2000-1:5000, WB:1:500-1:2000,
IHC:1:50-1:200

Protein Background:

ZC3H12A is an MCP1 (CCL2; MIM 158105)-induced protein that acts as a transcriptional activator and causes cell death of cardiomyocytes, possibly via induction of genes associated with apoptosis.

Gene ID:

ZC3H12A

Uniprot

Q5D1E8

Synonyms:

zinc finger CCCH-type containing 12A

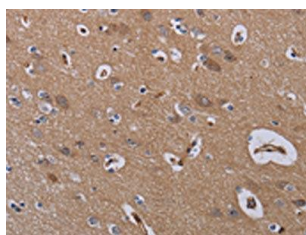
Immunogen:

Fusion protein of human ZC3H12A.

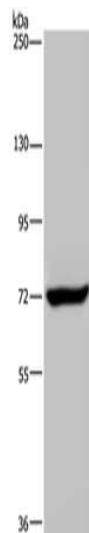
Storage:

-20° C, pH7.4 PBS, 0.05% NaN₃, 40% Glycerol

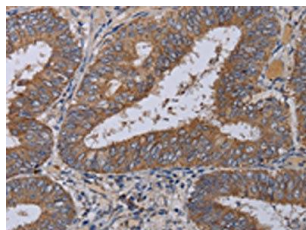
Product Images



The image on the left is immunohistochemistry of paraffin-embedded Human brain tissue using PACO16660(ZC3H12A Antibody) at dilution 1/40, on the right is treated with fusion protein. (Original magnification: x—200).



Gel: 6%SDS-PAGE, Lysate: 40 μ g, Lane: K562 cells, Primary antibody: PACO16660(ZC3H12A Antibody) at dilution 1/200, Secondary antibody: Goat anti rabbit IgG at 1/8000 dilution, Exposure time: 20 seconds.



The image on the left is immunohistochemistry of paraffin-embedded Human colon cancer tissue using PACO16660(ZC3H12A Antibody) at dilution 1/40, on the right is treated with fusion protein. (Original magnification: x—200).