

# PABPC1 Antibody



PACO16672

---

## Product Information

**Size:**

50ul

**Reactivity:**

Human, Mouse, Rat

**Source:**

Rabbit

**Isotype:**

IgG

**Applications:**

ELISA, WB

**Recommended dilutions:**

ELISA:1:2000-1:5000, WB:1:500-1:2000

**Protein Background:**

This gene encodes a poly(A) binding protein. The protein shuttles between the nucleus and cytoplasm and binds to the 3' poly(A) tail of eukaryotic messenger RNAs via RNA-recognition motifs. The binding of this protein to poly(A) promotes ribosome recruitment and translation initiation; it is also required for poly(A) shortening which is the first step in mRNA decay. The gene is part of a small gene family including three protein-coding genes and several pseudogenes.

**Gene ID:**

PABPC1

**Uniprot**

P11940

**Synonyms:**

poly(A) binding protein, cytoplasmic 1

**Immunogen:**

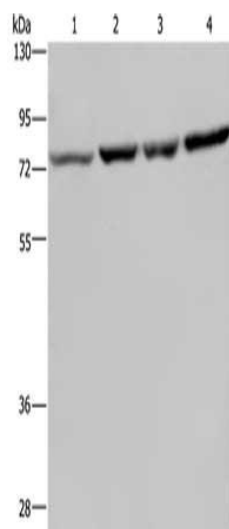
Fusion protein of human PABPC1.

**Storage:**

-20&deg; C, pH7.4 PBS, 0.05% NaN<sub>3</sub>, 40% Glycerol

## Product Images

---



Gel: 8%SDS-PAGE, Lysate: 40  $\mu$ g, Lane 1-4: A549 cells, PC3 cells, Hela cells, LoVo cells, Primary antibody: PACO16672(PABPC1 Antibody) at dilution 1/500, Secondary antibody: Goat anti rabbit IgG at 1/8000 dilution, Exposure time: 10 seconds.