

## Product Information

**Size:**

50ul

**Reactivity:**

Human, Mouse

**Source:**

Rabbit

**Isotype:**

IgG

**Applications:**

ELISA, IHC

**Recommended dilutions:**

ELISA:1:2000-1:5000, IHC:1:50-1:200

**Protein Background:**

LALP1 (lysosomal apyrase-like protein 1), also known as ENTPD7 (ectonucleoside triphosphate diphosphohydrolase 7), is a 604 amino acid, multi-pass membrane protein that belongs to the GDA1/CD39 NTPase family. Preferentially hydrolyzing nucleoside 5'-triphosphates, LALP1 and has an order of activity with respect to possible substrates, which is UTP > GTP > CTP.

**Gene ID:**

ENTPD7

**Uniprot**

Q9NQZ7

**Synonyms:**

ectonucleoside triphosphate diphosphohydrolase 7

**Immunogen:**

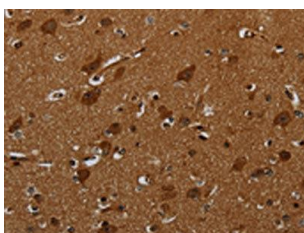
Fusion protein of human ENTPD7.

**Storage:**

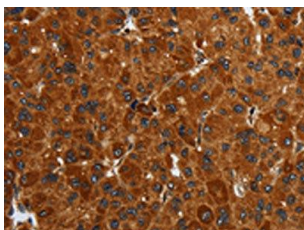
-20&deg; C, pH7.4 PBS, 0.05% NaN<sub>3</sub>, 40% Glycerol

## Product Images

---



The image on the left is immunohistochemistry of paraffin-embedded Human brain tissue using PACO16684(ENTPD7 Antibody) at dilution 1/40, on the right is treated with fusion protein. (Original magnification: x—200).



The image on the left is immunohistochemistry of paraffin-embedded Human liver cancer tissue using PACO16684(ENTPD7 Antibody) at dilution 1/40, on the right is treated with fusion protein. (Original magnification: x—200).