

PACO16688

Product Information

Size:

50ul

Reactivity:

Human, Mouse, Rat

Source:

Rabbit

Isotype:

IgG

Applications:

ELISA, IHC

Recommended dilutions:

ELISA:1:2000-1:5000, IHC:1:50-1:200

Protein Background:

Growth hormone-inducible transmembrane protein is a protein that in humans is encoded by the GHITM gene. Required for the mitochondrial tubular network and cristae organization. Involved in apoptotic release of cytochrome c.

Gene ID:

GHITM

Uniprot

Q9H3K2

Synonyms:

growth hormone inducible transmembrane protein

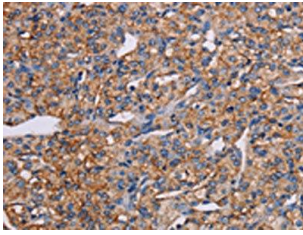
Immunogen:

Fusion protein of human GHITM.

Storage:

-20°C; C, pH7.4 PBS, 0.05% NaN₃, 40% Glycerol

Product Images



The image on the left is immunohistochemistry of paraffin-embedded Human prostate cancer tissue using PACO16688(GHITM Antibody) at dilution 1/30, on the right is treated with fusion protein. (Original magnification: x—200).