
Product Information

Size:

50ul

Reactivity:

Human, Mouse

Source:

Rabbit

Isotype:

IgG

Applications:

ELISA, WB, IHC

Recommended dilutions:

ELISA:1:2000-1:5000, WB:1:500-1:2000,
IHC:1:100-1:300

Protein Background:

PLEKHG6 functions as a guanine nucleotide exchange factor activating the small GTPase RHOA, which, in turn, induces myosin filament formation. It activates RHOG but not activate RAC1, or to a much lower extent than RHOA and RHOG. Part of a functional unit, involving MyoGEF, MYH10 and RHOA, at the cleavage furrow to advance furrow ingression during cytokinesis. In epithelial cells, required for the formation of microvilli and membrane ruffles on the apical pole. Along with EZR, required for normal macropinocytosis.

Gene ID:

PLEKHG6

Uniprot

Q3KR16

Synonyms:

pleckstrin homology domain containing, family G (with RhoGef domain) member 6

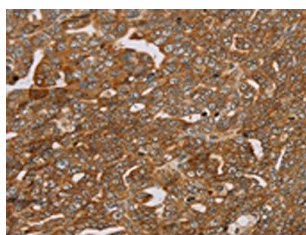
Immunogen:

Fusion protein of human PLEKHG6.

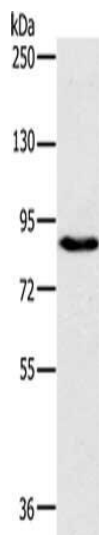
Storage:

-20°C; C, pH7.4 PBS, 0.05% NaN₃, 40% Glycerol

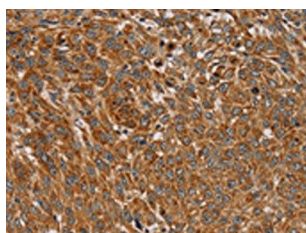
Product Images



The image on the left is immunohistochemistry of paraffin-embedded Human cervical cancer tissue using PACO16724(PLEKHG6 Antibody) at dilution 1/45, on the right is treated with fusion protein. (Original magnification: x—200).



Gel: 6%SDS-PAGE, Lysate: 40 μ g, Lane: 231 cells, Primary antibody: PACO16724(PLEKHG6 Antibody) at dilution 1/800, Secondary antibody: Goat anti rabbit IgG at 1/8000 dilution, Exposure time: 10 seconds.



The image on the left is immunohistochemistry of paraffin-embedded Human lung cancer tissue using PACO16724(PLEKHG6 Antibody) at dilution 1/45, on the right is treated with fusion protein. (Original magnification: x—200).