

PACO16726

Product Information

Size:

50ul

Reactivity:

Human, Mouse, Rat

Source:

Rabbit

Isotype:

IgG

Applications:

ELISA, WB

Recommended dilutions:

ELISA:1:2000-1:10000, WB:1:1000-1:5000

Protein Background:

This gene encodes a member of the globin superfamily and is expressed in skeletal and cardiac muscles. The encoded protein is a haemoprotein contributing to intracellular oxygen storage and transcellular facilitated diffusion of oxygen. At least three alternatively spliced transcript variants encoding the same protein have been reported.

Gene ID:

MB

Uniprot

P02144

Synonyms:

myoglobin

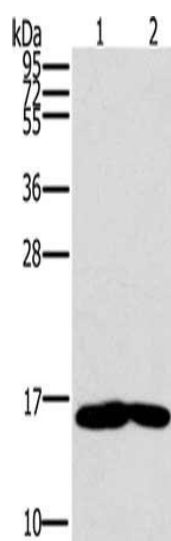
Immunogen:

Fusion protein of human MB.

Storage:

-20° C, pH7.4 PBS, 0.05% NaN₃, 40% Glycerol

Product Images



Gel: 10%SDS-PAGE, Lysate: 40 μ g, Lane 1-2: Mouse heart tissue, Mouse muscle tissue, Primary antibody: PACO16726(MB Antibody) at dilution 1/600, Secondary antibody: Goat anti rabbit IgG at 1/8000 dilution, Exposure time: 10 seconds.