

# NIT1 Antibody



PACO16782

---

## Product Information

**Size:**

50ul

**Reactivity:**

Human, Mouse, Rat

**Source:**

Rabbit

**Isotype:**

IgG

**Applications:**

ELISA, WB, IHC

**Recommended dilutions:**

ELISA:1:2000-1:5000, WB:1:200-1:1000,  
IHC:1:50-1:200

**Protein Background:**

This gene encodes a member of the nitrilase protein family with homology to bacterial and plant nitrilases, enzymes that cleave nitriles and organic amides to the corresponding carboxylic acid, plus ammonia. Multiple transcript variants encoding different isoforms have been found for this gene.

**Gene ID:**

NIT1

**Uniprot**

Q86X76

**Synonyms:**

nitrilase 1

**Immunogen:**

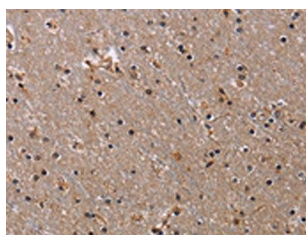
Fusion protein of human NIT1.

**Storage:**

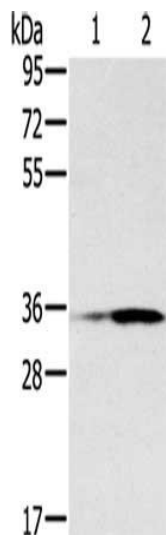
-20°C; C, pH7.4 PBS, 0.05% NaN<sub>3</sub>, 40% Glycerol

## Product Images

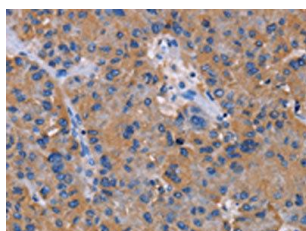
---



The image on the left is immunohistochemistry of paraffin-embedded Human brain tissue using PACO16782(NIT1 Antibody) at dilution 1/30, on the right is treated with fusion protein. (Original magnification: x—200).



Gel: 8%SDS-PAGE, Lysate: 40 &mu; g, Lane 1-2: Human placenta tissue, Human fetal liver tissue, Primary antibody: PACO16782(NIT1 Antibody) at dilution 1/400, Secondary antibody: Goat anti rabbit IgG at 1/8000 dilution, Exposure time: 5 minutes.



The image on the left is immunohistochemistry of paraffin-embedded Human liver cancer tissue using PACO16782(NIT1 Antibody) at dilution 1/30, on the right is treated with fusion protein. (Original magnification: x—200).