

PACO16806

---

## Product Information

**Size:**

50ul

**Reactivity:**

Human

**Source:**

Rabbit

**Isotype:**

IgG

**Applications:**

ELISA, WB

**Recommended dilutions:**

ELISA:1:1000-1:2000, WB:1:200-1:1000

**Protein Background:**

NUSAP1 is a nucleolar-spindle-associated protein that plays a role in spindle microtubule organization. May associate with chromosomes and promote the organization of mitotic spindle microtubules around them.

**Gene ID:**

NUSAP1

**Uniprot**

Q9BXS6

**Synonyms:**

nucleolar and spindle associated protein 1

**Immunogen:**

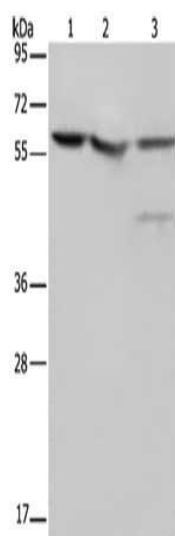
Fusion protein of human NUSAP1.

**Storage:**

-20&deg; C, pH7.4 PBS, 0.05% NaN<sub>3</sub>, 40% Glycerol

## Product Images

---



Gel: 8%SDS-PAGE, Lysate: 40  $\mu$ g, Lane 1-3: HT29 cells, Hela cells, 293T cells, Primary antibody: PACO16806(NUSAP1 Antibody) at dilution 1/200, Secondary antibody: Goat anti rabbit IgG at 1/8000 dilution, Exposure time: 20 seconds.