

Product Information

Size:

50ul

Reactivity:

Human

Source:

Rabbit

Isotype:

IgG

Applications:

ELISA, IHC

Recommended dilutions:

ELISA:1:1000-1:2000, IHC:1:25-1:100

Protein Background:

PAGE-2 (prostate-associated gene 2 protein), also known as P antigen family member 2B, GAGEC2, CT16.4 or GAGEE2, is a 111 amino acid, protein that is expressed primarily in testis and belongs to the GAGE family. PAGE-2B (prostate-associated gene 2B protein), also designated putative G antigen family E member 3, P antigen family member 2B, CT16.5 or GAGEE3, also consists of 111 amino acid, and is a member of the GAGE family. Both proteins are encoded by genes that map to human chromosome X, which consists of about 153 million base pairs and nearly 1,000 genes. The combination of a X and Y chromosome lead to normal male development while two copies of X lead to normal female development.

Gene ID:

PAGE2

Uniprot

Q7Z2X7

Synonyms:

P antigen family, member 2 (prostate associated)

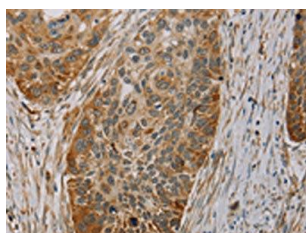
Immunogen:

Fusion protein of human PAGE2.

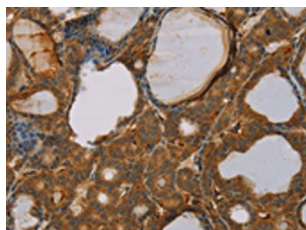
Storage:

-20° C, pH7.4 PBS, 0.05% NaN3, 40% Glycerol

Product Images



The image on the left is immunohistochemistry of paraffin-embedded Human esophagus cancer tissue using PACO16830(PAGE2 Antibody) at dilution 1/20, on the right is treated with fusion protein. (Original magnification: x—200).



The image on the left is immunohistochemistry of paraffin-embedded Human thyroid cancer tissue using PACO16830(PAGE2 Antibody) at dilution 1/20, on the right is treated with fusion protein. (Original magnification: x—200).