

PACO16831

---

## Product Information

**Size:**

50ul

**Reactivity:**

Human, Mouse

**Source:**

Rabbit

**Isotype:**

IgG

**Applications:**

ELISA, WB, IHC

**Recommended dilutions:**

ELISA:1:1000-1:2000, WB:1:200-1:1000,  
IHC:1:25-1:100

**Protein Background:**

PAGE-2 (prostate-associated gene 2 protein), also known as P antigen family member 2B, GAGEC2, CT16.4 or GAGEE2, is a 111 amino acid, protein that is expressed primarily in testis and belongs to the GAGE family. PAGE-2B (prostate-associated gene 2B protein), also designated putative G antigen family E member 3, P antigen family member 2B, CT16.5 or GAGEE3, also consists of 111 amino acid, and is a member of the GAGE family.

**Gene ID:**

PAGE2

**Uniprot**

Q7Z2X7

**Synonyms:**

P antigen family, member 2 (prostate associated)

**Immunogen:**

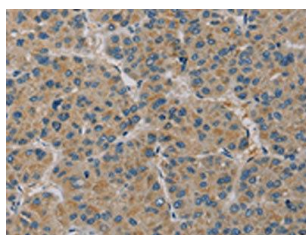
Fusion protein of human PAGE2.

**Storage:**

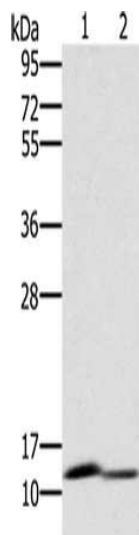
-20&deg; C, pH7.4 PBS, 0.05% NaN3, 40% Glycerol

## Product Images

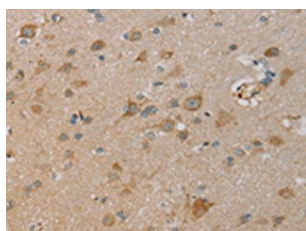
---



The image on the left is immunohistochemistry of paraffin-embedded Human liver cancer tissue using PACO16831(PAGE2 Antibody) at dilution 1/20, on the right is treated with fusion protein. (Original magnification: x—200).



Gel: 10%SDS-PAGE, Lysate: 40 &mu; g, Lane 1-2: Mouse brain tissue, Mouse kidney tissue, Primary antibody: PACO16831(PAGE2 Antibody) at dilution 1/400, Secondary antibody: Goat anti rabbit IgG at 1/8000 dilution, Exposure time: 1 minute.



The image on the left is immunohistochemistry of paraffin-embedded Human brain tissue using PACO16831(PAGE2 Antibody) at dilution 1/20, on the right is treated with fusion protein. (Original magnification: x—200).