

PARP11 Antibody



PACO16843

Product Information

Size:

50ul

Reactivity:

Human, Mouse

Source:

Rabbit

Isotype:

IgG

Applications:

ELISA, IHC

Recommended dilutions:

ELISA:1:1000-1:2000, IHC:1:25-1:100

Protein Background:

Poly(ADP-ribosylation) is a method of DNA damage-dependent posttranslational modification that helps to rescue injured proliferating cells from cell death. The PARP (poly(ADP-ribose) polymerase) proteins comprise a superfamily of enzymes that functionally modify histones and other nuclear proteins, thereby preventing cell death. PARPs use NAD⁺ as a substrate to catalytically transfer ADP-ribose residues onto protein acceptors; a process that, when repeated multiple times, leads to the formation of poly(ADPribose) chains on the protein.

Gene ID:

PARP11

Uniprot

Q9NR21

Synonyms:

poly (ADP-ribose) polymerase family, member 11

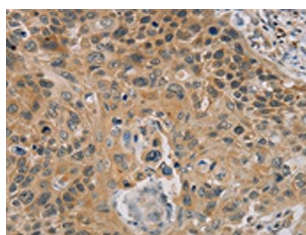
Immunogen:

Fusion protein of human PARP11.

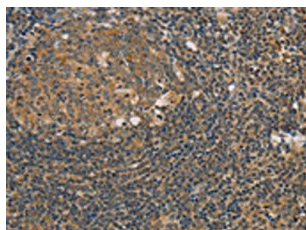
Storage:

-20° C, pH7.4 PBS, 0.05% NaN₃, 40% Glycerol

Product Images



The image on the left is immunohistochemistry of paraffin-embedded Human esophagus cancer tissue using PACO16843(PARP11 Antibody) at dilution 1/20, on the right is treated with fusion protein. (Original magnification: x—200).



The image on the left is immunohistochemistry of paraffin-embedded Human tonsil tissue using PACO16843(PARP11 Antibody) at dilution 1/20, on the right is treated with fusion protein. (Original magnification: x—200).