

# PDLIM1 Antibody



PACO16849

---

## Product Information

**Size:**

50ul

**Reactivity:**

Human, Mouse, Rat

**Source:**

Rabbit

**Isotype:**

IgG

**Applications:**

ELISA, WB

**Recommended dilutions:**

ELISA:1:2000-1:10000, WB:1:1000-1:5000

**Protein Background:**

This gene encodes a member of the enigma protein family. The protein contains two protein interacting domains, a PDZ domain at the amino terminal end and one to three LIM domains at the carboxyl terminal. It is a cytoplasmic protein associated with the cytoskeleton. The protein may function as an adapter to bring other LIM-interacting proteins to the cytoskeleton. Pseudogenes associated with this gene are located on chromosomes 3, 14 and 17.

**Gene ID:**

PDLIM1

**Uniprot**

O00151

**Synonyms:**

PDZ and LIM domain 1

**Immunogen:**

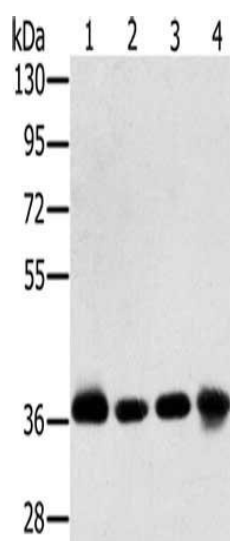
Fusion protein of human PDLIM1.

**Storage:**

-20&deg; C, pH7.4 PBS, 0.05% NaN3, 40% Glycerol

## Product Images

---



Gel: 8%SDS-PAGE, Lysate: 40  $\mu$ g, Lane 1-4: Huvec cells, 293T cells, hepg2 cells, mouse liver tissue, Primary antibody: PACO16849(PDLIM1 Antibody) at dilution 1/600, Secondary antibody: Goat anti rabbit IgG at 1/8000 dilution, Exposure time: 10 seconds.