

Product Information

Size:

50ul

Reactivity:

Human

Source:

Rabbit

Isotype:

IgG

Applications:

ELISA, WB

Recommended dilutions:

ELISA:1:1000-1:2000, WB:1:200-1:1000

Protein Background:

The paired immunoglobulin-like type 2 receptors consist of highly related activating and inhibitory receptors that are involved in the regulation of many aspects of the immune system. The paired immunoglobulin-like receptor genes are located in a tandem head-to-tail orientation on chromosome 7. This gene encodes the activating member of the receptor pair and contains a truncated cytoplasmic tail relative to its inhibitory counterpart (PILRA), that has a long cytoplasmic tail with immunoreceptor tyrosine-based inhibitory (ITIM) motifs.

Gene ID:

PILRB

Uniprot

Q9UKJ0

Synonyms:

paired immunoglobulin-like type 2 receptor beta

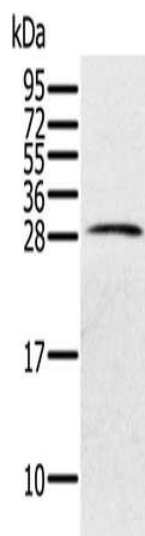
Immunogen:

Fusion protein of human PILRB.

Storage:

-20°C, pH7.4 PBS, 0.05% NaN₃, 40% Glycerol

Product Images



Gel: 12%SDS-PAGE, Lysate: 40 μ g, Lane: Human testis tissue, Primary antibody: PACO16868(PILRB Antibody) at dilution 1/200, Secondary antibody: Goat anti rabbit IgG at 1/8000 dilution, Exposure time: 40 seconds.