

PACO16874

Product Information

Size:

50ul

Reactivity:

Human

Source:

Rabbit

Isotype:

IgG

Applications:

ELISA, IHC

Recommended dilutions:

ELISA:1:1000-1:2000, IHC:1:25-1:100

Protein Background:

The protein encoded by this gene is a member of the phosphoinositide-specific phospholipase C family. Members in this family, classified into six isotypes that are tissue- and organ-specific, hydrolyze phosphatidylinositol 4,5-bisphosphate just before the phosphate group to yield diacylglycerol and inositol 1,4,5-trisphosphate. This protein localizes to the acrosome in spermatozoa and elicits Ca(2+) oscillations and egg activation during fertilization that leads to early embryonic development. Alternative splicing results in multiple transcript variants.

Gene ID:

PLCZ1

Uniprot

Q86YW0

Synonyms:

phospholipase C, zeta 1

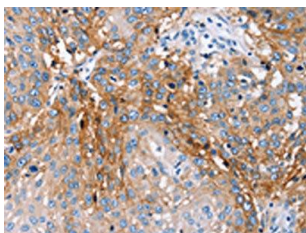
Immunogen:

Fusion protein of human PLCZ1.

Storage:

-20° C, pH7.4 PBS, 0.05% NaN3, 40% Glycerol

Product Images



The image on the left is immunohistochemistry of paraffin-embedded Human lung cancer tissue using PACO16874(PLCZ1 Antibody) at dilution 1/25, on the right is treated with fusion protein. (Original magnification: x—200).