

Product Information

Size:

50ul

Reactivity:

Human, Mouse, Rat

Source:

Rabbit

Isotype:

IgG

Applications:

ELISA, WB, IHC

Recommended dilutions:

ELISA:1:2000-1:5000, WB:1:500-1:2000,
IHC:1:40-1:150

Protein Background:

This gene encodes a member of the peptidyl-prolyl cis-trans isomerase (PPIase) family. PPIases catalyze the cis-trans isomerization of proline imidic peptide bonds in oligopeptides and accelerate the folding of proteins. The encoded protein is a cyclosporin binding-protein and may play a role in cyclosporin A-mediated immunosuppression. The protein can also interact with several HIV proteins, including p55 gag, Vpr, and capsid protein, and has been shown to be necessary for the formation of infectious HIV virions.

Gene ID:

PPIA

Uniprot

P62937

Synonyms:

peptidylprolyl isomerase A (cyclophilin A)

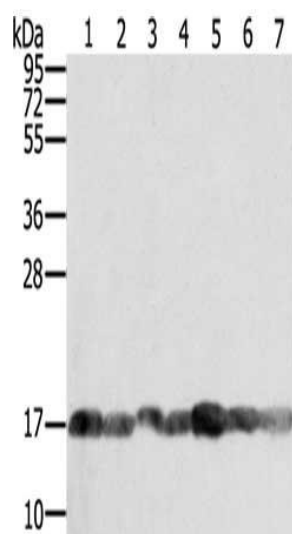
Immunogen:

Fusion protein of human PPIA.

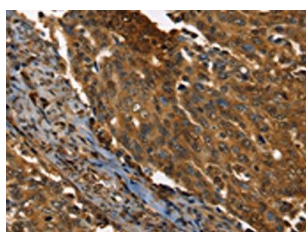
Storage:

-20°C, pH7.4 PBS, 0.05% NaN₃, 40% Glycerol

Product Images



Gel: 12%SDS-PAGE, Lysate: 40 μ g, Lane 1-7: PC3 cells, Raji cells, NIH/3T3 cells, K562 cells, hela cells, hepg2 cells, Jurkat cells, Primary antibody: PACO16887(PPIA Antibody) at dilution 1/400, Secondary antibody: Goat anti rabbit IgG at 1/8000 dilution, Exposure time: 5 seconds.



The image on the left is immunohistochemistry of paraffin-embedded Human cervical cancer tissue using PACO16887(PPIA Antibody) at dilution 1/35, on the right is treated with fusion protein. (Original magnification: x—200).