

## Product Information

**Size:**

50ul

**Reactivity:**

Human, Mouse, Rat

**Source:**

Rabbit

**Isotype:**

IgG

**Applications:**

ELISA, WB

**Recommended dilutions:**

ELISA:1:2000-1:5000, WB:1:500-1:2000

**Protein Background:**

RAN (ras-related nuclear protein) is a small GTP binding protein belonging to the RAS superfamily that is essential for the translocation of RNA and proteins through the nuclear pore complex. The RAN protein is also involved in control of DNA synthesis and cell cycle progression. Nuclear localization of RAN requires the presence of regulator of chromosome condensation 1 (RCC1). Mutations in RAN disrupt DNA synthesis.

**Gene ID:**

RAN

**Uniprot**

P62826

**Synonyms:**

RAN, member RAS oncogene family

**Immunogen:**

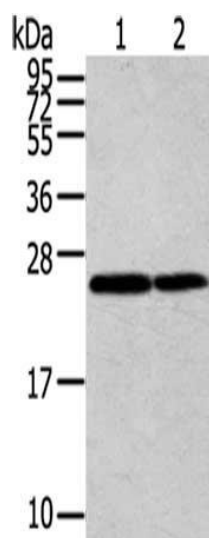
Full length fusion protein.

**Storage:**

-20&deg; C, pH7.4 PBS, 0.05% NaN<sub>3</sub>, 40% Glycerol

## Product Images

---



Gel: 12%SDS-PAGE, Lysate: 40  $\mu$ g, Lane 1-2: Jurkat cells, Hela cells, Primary antibody: PACO16937(RAN Antibody) at dilution 1/200 dilution, Secondary antibody: Goat anti rabbit IgG at 1/8000 dilution, Exposure time: 30 seconds.