

RASSF9 Antibody



PACO16949

Product Information

Size:

50ul

Reactivity:

Human, Mouse, Rat

Source:

Rabbit

Isotype:

IgG

Applications:

ELISA, IHC

Recommended dilutions:

ELISA:1:1000-1:2000, IHC:1:25-1:100

Protein Background:

The protein encoded by this gene localizes to perinuclear endosomes. This protein associates with peptidylglycine alpha-amidating monooxygenase, and may be involved with the trafficking of this enzyme through secretory or endosomal pathways.

Gene ID:

RASSF9

Uniprot

O75901

Synonyms:

Ras association (RalGDS/AF-6) domain family (N-terminal) member 9

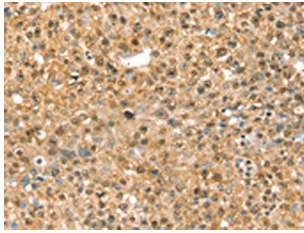
Immunogen:

Fusion protein of human RASSF9.

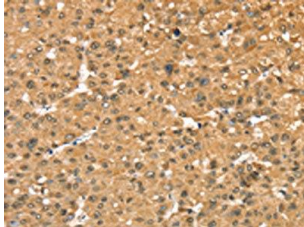
Storage:

-20°C; C, pH7.4 PBS, 0.05% NaN₃, 40% Glycerol

Product Images



The image on the left is immunohistochemistry of paraffin-embedded Human breast cancer tissue using PACO16949(RASSF9 Antibody) at dilution 1/40, on the right is treated with fusion protein. (Original magnification: x—200).



The image on the left is immunohistochemistry of paraffin-embedded Human liver cancer tissue using PACO16949(RASSF9 Antibody) at dilution 1/40, on the right is treated with fusion protein. (Original magnification: x—200).