

PACO16951

Product Information

Size:

50ul

Reactivity:

Human, Mouse

Source:

Rabbit

Isotype:

IgG

Applications:

ELISA, IHC

Recommended dilutions:

ELISA:1:2000-1:10000, IHC:1:30-1:150

Protein Background:

The RAS oncogene (MIM 190020) is mutated in nearly one-third of all human cancers. Members of the RAS superfamily are plasma membrane GTP-binding proteins that modulate intracellular signal transduction pathways. A subfamily of RAS effectors, including RASSF3, share a RAS association (RA) domain.

Gene ID:

RASSF3

Uniprot

Q86WH2

Synonyms:

Ras association (RalGDS/AF-6) domain family member 3

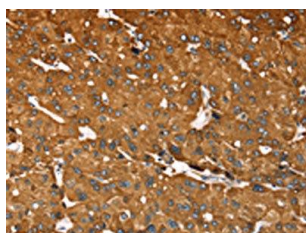
Immunogen:

Fusion protein of human RASSF3.

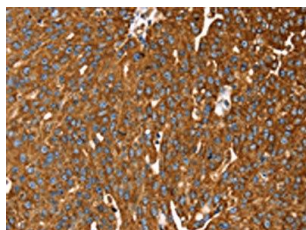
Storage:

-20° C, pH7.4 PBS, 0.05% NaN₃, 40% Glycerol

Product Images



The image on the left is immunohistochemistry of paraffin-embedded Human liver cancer tissue using PACO16951(RASSF3 Antibody) at dilution 1/35, on the right is treated with fusion protein. (Original magnification: x—200).



The image on the left is immunohistochemistry of paraffin-embedded Human breast cancer tissue using PACO16951(RASSF3 Antibody) at dilution 1/35, on the right is treated with fusion protein. (Original magnification: x—200).