

Product Information

Size:

50ul

Reactivity:

Human

Source:

Rabbit

Isotype:

IgG

Applications:

ELISA, WB, IHC

Recommended dilutions:

ELISA:1:2000-1:5000, WB:1:500-1:2000,
IHC:1:25-1:100

Protein Background:

RASSF7 (Ras association domain-containing protein 7), also designated HRAS1-related cluster protein 1, is a 373 amino acid, protein that localizes to the centrosome. RASSF7, RASSF8, RASSF9 and RASSF10 are four evolutionary conserved proteins that are collectively known as the N-terminal RASSF family. Expressed in skin, neural tube and eye, RASSF7 is believed to play an essential role in mitosis. Further supporting its mitotic role, knockdown of Xenopus RASSF7 has been shown to influence cell failure to form mitotic spindle and also cause nuclear breakdown and apoptosis.

Gene ID:

RASSF7

Uniprot

Q02833

Synonyms:

Ras association (RalGDS/AF-6) domain family (N-terminal) member 7

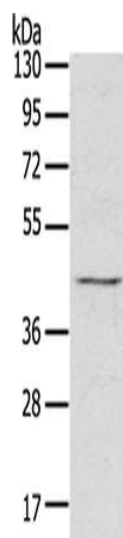
Immunogen:

Fusion protein of human RASSF7.

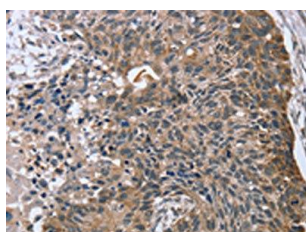
Storage:

-20° C, pH7.4 PBS, 0.05% NaN3, 40% Glycerol

Product Images



Gel: 8%SDS-PAGE, Lysate: 60 μ g, Lane: Raji cells, Primary antibody: PACO16952(RASSF7 Antibody) at dilution 1/800, Secondary antibody: Goat anti rabbit IgG at 1/8000 dilution, Exposure time: 5 seconds.



The image on the left is immunohistochemistry of paraffin-embedded Human esophagus cancer tissue using PACO16952(RASSF7 Antibody) at dilution 1/45, on the right is treated with fusion protein. (Original magnification: x—200).