

RDH11 Antibody



PACO16960

Product Information

Size:

50ul

Reactivity:

Human, Mouse

Source:

Rabbit

Isotype:

IgG

Applications:

ELISA, IHC

Recommended dilutions:

ELISA:1:1000-1:2000, IHC:1:10-1:50

Protein Background:

The protein encoded by this gene is an NADPH-dependent retinal reductase and a short-chain dehydrogenase/reductase. The encoded protein has no steroid dehydrogenase activity.

Gene ID:

RDH11

Uniprot

Q8TC12

Synonyms:

retinol dehydrogenase 11 (all-trans/9-cis/11-cis)

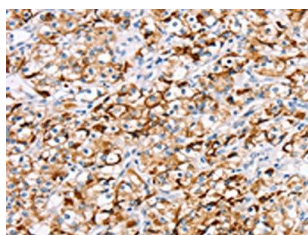
Immunogen:

Fusion protein of human RDH11.

Storage:

-20° C, pH7.4 PBS, 0.05% NaN₃, 40% Glycerol

Product Images



The image on the left is immunohistochemistry of paraffin-embedded Human prostate cancer tissue using PACO16960(RDH11 Antibody) at dilution 1/20, on the right is treated with fusion protein. (Original magnification: x—200).