

# RGS11 Antibody



PACO16976

---

## Product Information

**Size:**

50ul

**Reactivity:**

Human

**Source:**

Rabbit

**Isotype:**

IgG

**Applications:**

ELISA, IHC

**Recommended dilutions:**

ELISA:1:1000-1:2000, IHC:1:10-1:50

**Protein Background:**

The protein encoded by this gene belongs to the RGS (regulator of G protein signaling) family. Members of the RGS family act as GTPase-activating proteins on the alpha subunits of heterotrimeric, signal-transducing G proteins. This protein inhibits signal transduction by increasing the GTPase activity of G protein alpha subunits, thereby driving them into their inactive GDP-bound form. Alternative splicing occurs at this locus and four transcript variants encoding distinct isoforms have been identified.

**Gene ID:**

RGS11

**Uniprot**

O94810

**Synonyms:**

regulator of G-protein signaling 11

**Immunogen:**

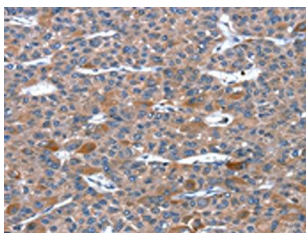
Fusion protein of human RGS11.

**Storage:**

-20&deg; C, pH7.4 PBS, 0.05% NaN<sub>3</sub>, 40% Glycerol

## Product Images

---



The image on the left is immunohistochemistry of paraffin-embedded Human liver cancer tissue using PACO16976(RGS11 Antibody) at dilution 1/20, on the right is treated with fusion protein. (Original magnification: x—200).