

Product Information

Size:

50ul

Reactivity:

Human

Source:

Rabbit

Isotype:

IgG

Applications:

ELISA, WB, IHC

Recommended dilutions:

ELISA:1:2000-1:5000, WB:1:500-1:2000,
IHC:1:30-1:150

Protein Background:

Replication protein A 32 kDa subunit is a protein that in humans is encoded by the RPA2 gene. As part of the heterotrimeric replication protein A complex (RPA/RP-A), binds and stabilizes single-stranded DNA intermediates, that form during DNA replication or upon DNA stress. It prevents their reannealing and in parallel, recruits and activates different proteins and complexes involved in DNA metabolism. Thereby, it plays an essential role both in DNA replication and the cellular response to DNA damage.

Gene ID:

RPA2

Uniprot

P15927

Synonyms:

replication protein A2, 32kDa

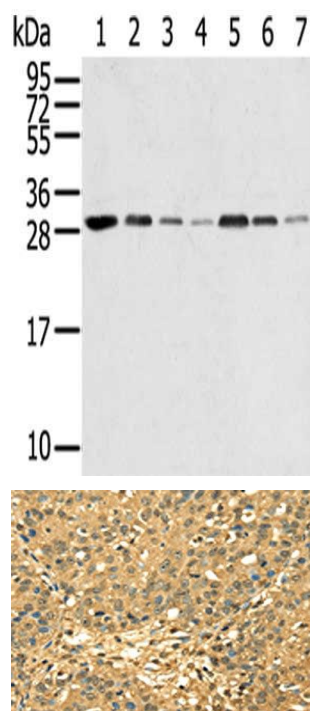
Immunogen:

Full length fusion protein.

Storage:

-20°C, pH7.4 PBS, 0.05% Na₃N, 40% Glycerol

Product Images



Gel: 12%SDS-PAGE, Lysate: 40 μ g, Lane 1-7: HeLa cells, HUVEC cells, HepG2 cells, A549 cells, Jurkat cells, 231 cells, A431 cells, Primary antibody: PACO17013(RPA2 Antibody) at dilution 1/650 dilution, Secondary antibody: Goat anti rabbit IgG at 1/8000 dilution, Exposure time: 10 seconds.

The image on the left is immunohistochemistry of paraffin-embedded Human breast cancer tissue using PACO17013(RPA2 Antibody) at dilution 1/45, on the right is treated with fusion protein. (Original magnification: x—200).